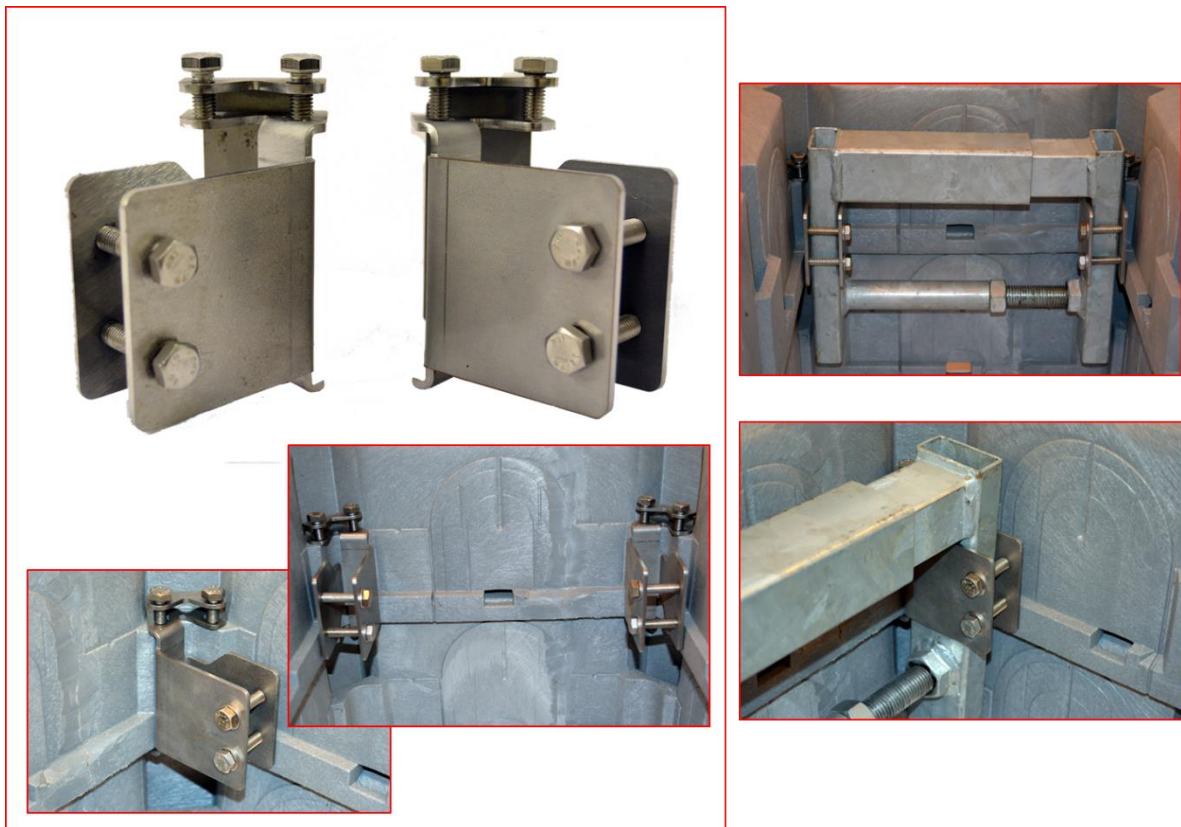



Modular Jointbox MOBRA Adaptors

The Modular Jointbox MOBRA Adaptors enables a No-Drill MOBRA, therefore a fibre node, to fit into a modular jointbox. The adaptors are left and right handed that fit into the jointbox corner fixings. The adaptors are fitted to the top ring uppermost corner fixings and locked into place. The No-drill MOBRA Bracket is fitted into these adaptors and secured with two retaining bolts. The adaptors are suitable for deployment in any size modular jointbox using the appropriate size of No-drill MOBRA.



Part No.	Description	
OPT-T0123	Modular Jointbox MOBRA Adaptor	